

MANOR HOUSE

@ Kyalami

3  2 

townhouses to let

141.6 m² | R18 300

3 bedroom | 2.5 bathroom | double garage

181.4 m² | R19 300

3 bedroom | 3 bathroom | double garage

181.3 m² | R20 100

4 bedroom | 3 bathroom | double garage



from **R18 300**

Manor House @ Kyalami offers spacious and modern townhouses with lavish finishes. Take your pick between three- and four-bedroom simplexes and duplexes, all with double garages. We boast an array of coveted features such as private gardens and a swimming pool. Our sought after address in Kyalami places you close to the N1 highway and Waterfall City and provides easy access to Sandton and Midrand.

The state-of-the-art, 24-hour security measures allow for ultimate peace of mind.

At Manor House, you don't need to compromise on luxury and convenience!

Features

- Pet friendly
- Private garden
- Jungle gym
- Kick-about/soccer field
- Kids' play area
- Swimming pool
- DSTV (Plug-and-play)
- Visitor parking
- WiFi
- State-of-the-art security
- Access control
- Manned guardhouse
- Perimeter wall with electric fence

Requirements

- Copy of your ID
- Latest payslip
- Three month's bank statements
- Minimum qualifying net salary of R45 000 pm

Approval in
5 minutes!



2 let now .co.za

central

Apply here:
<https://bit.ly/3YA0TSN>

Local amenities

Shopping centres

- Kyalami on Main 1.8 km
- Kyalami Grand Prix Circuit 2.5 km
- Polofields Crossing 3.0 km
- Waterfall Corner 3.1 km
- Kyalami Corner 3.7 km
- Woodmead Retail Park 6.0 km
- Mall of Africa 7.5 km

Accessibility

- Easy access to roads like R55, N1 and Allandale

Hospitals and day clinics

- Netcare Sunninghill Hospital 3.9 km
- Netcare Waterfall City Hospital 4.8 km

Sports and recreation

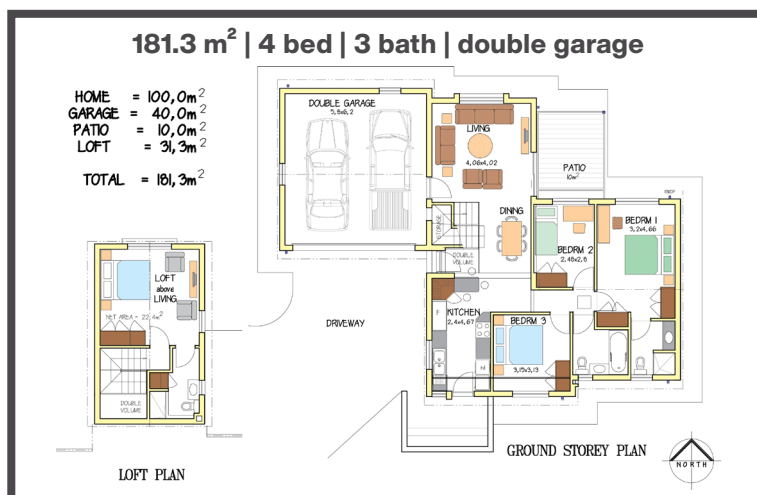
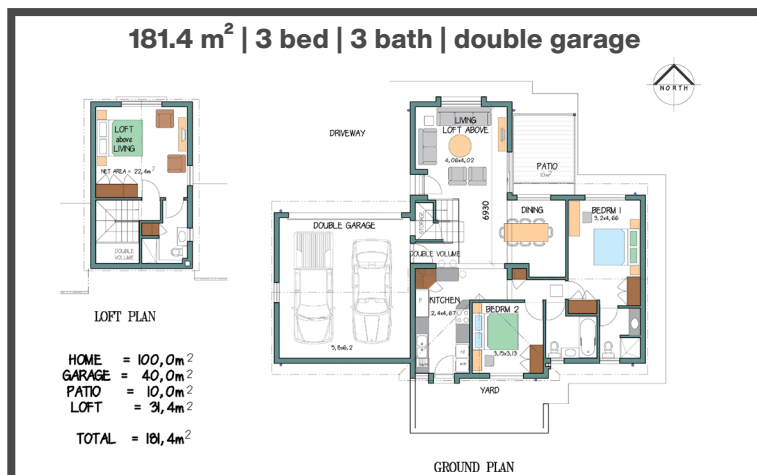
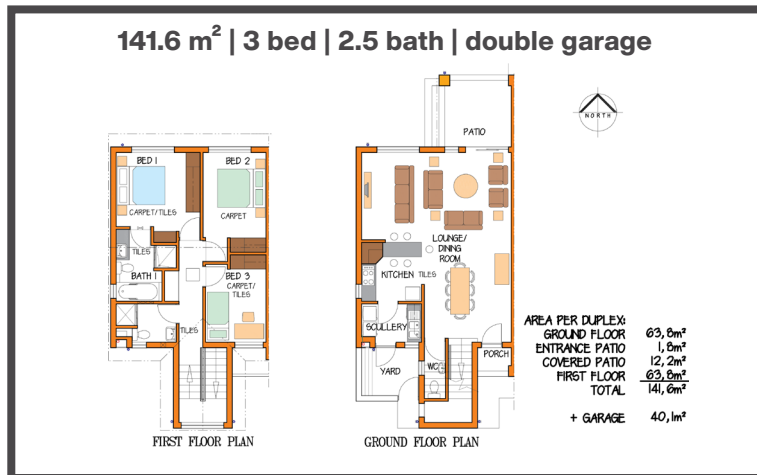
- Barbeque Downs Community Children's Park 400 m
- Barbeque Downs Community Bird Watching Area 400 m
- Barbeque Downs Community Dog Park 450 m
- CrossFit 2.0 km
- Virgin Active 3.0 km

Schools

- Pinnacle College Waterfall 350 m
- Curro Waterfall 4.0 km
- Reddam House Waterfall 4.0 km
- Kyalami Estates Pre-primary 4.5 km
- Midland Primary and High Schools 6.6 km
- Summer Hill International College 8.1 km

Watch video:

<https://bit.ly/3PEddir>



central

Apply here:
<https://bit.ly/3YA0TSN>