

SAN RIDGE HEIGHTS

2 1

apartments to let

56 m² | 2 bed | 1 bath

Second floor R8 000

First floor R8 100

Ground floor R8 500

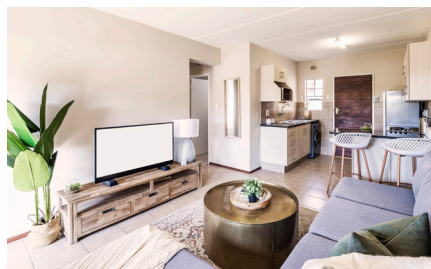
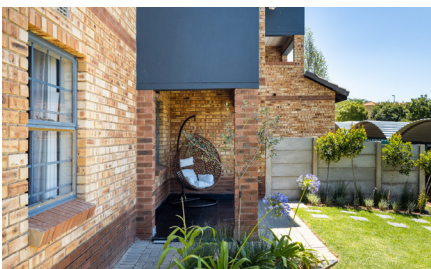
Discover sophisticated living at San Ridge Heights, offering modern apartments **TO LET**. This secure complex in the heart of **Midrand** guarantees a hassle-free lifestyle. Enjoy two-bedroom apartments with premium finishes. Walk to Carlswald Lifestyle Centre and San Ridge Square for added convenience. Ideal for young families and professionals, it's located near the N1 highway and major routes. Accessible public transport, including Gautrain and Putco, makes commuting easy. Elevate your lifestyle at San Ridge Heights!



from **R8 000**

Features

- Car wash
- Convenience shop/kiosk
- Kids' play area
- Trampolines
- Laundromat
- Outdoor gym
- Running track
- DSTv (Plug-and-play)
- State-of-the-art security
- Access control
- Manned guardhouse
- Patrolling guards
- Perimeter wall
- Prepaid water and electricity
- No rates or levies
- Dedicated client-care team
- Undercover parking
- Visitors parking



2 let now .co.za

central

Book a viewing now:
<https://bit.ly/3NjLvF2>

Local amenities

Shopping centres

- San Ridge Square 1.3 km
- Vodaworld 1.0 km
- Carlswald Lifestyle Centre 1.8 km
- Mall of Africa 7.7 km
- Waterfall Ridge 7.9 km

Hospitals and day clinics

- Netcare Waterfall City Hospital 6.4 km
- Elim Hospital 7.1 km
- Life Carstenhof Hospital 9.4 km

Food and entertainment

- News Cafe 1.2 km
- Cubana 1.7 km
- Chicken Licken 2.3 km
- Minnetonka Spur Steak Ranch 1.8 km
- Kyalami Grand Prix Circuit 7.7 km

Schools

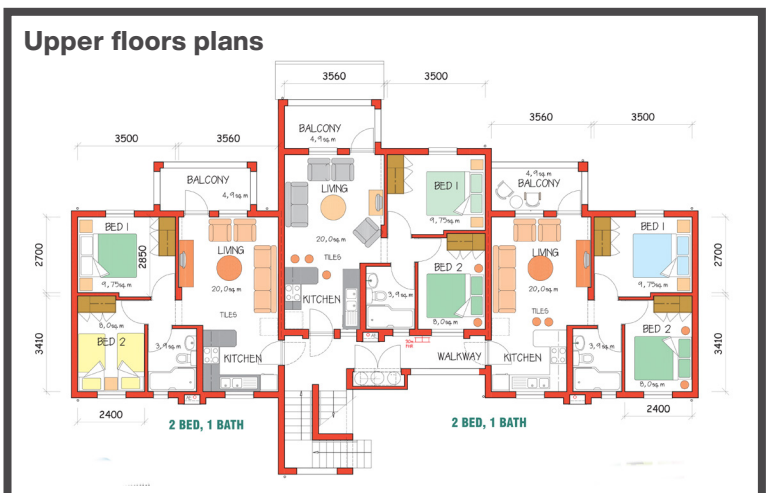
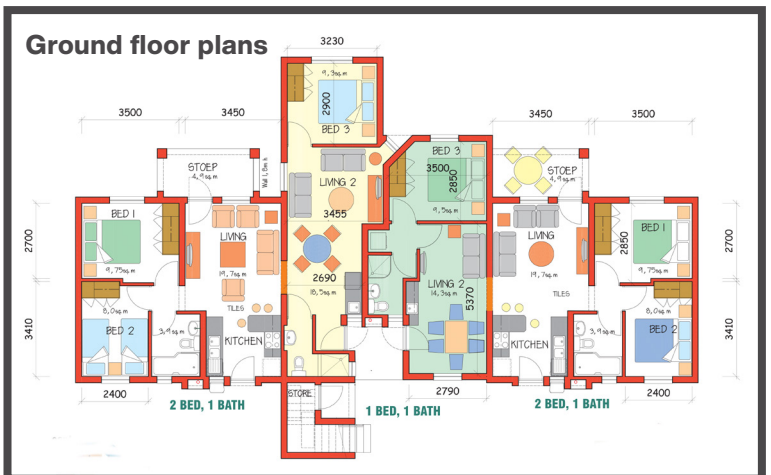
- Building Blocks 1.3 km
- Midland Primary & High School 3.7 km
- Varsity College 7.0 km
- Robins Nest Nursery School 350 m

Churches

- Christ Church Midrand 800 m
- Acts Christian Church 5.0 km

Accessibility

- Easy access to N1 highway, New Road & Olifantsfontein Road
- On Gautrain bus route



central

Book a viewing now:
<https://bit.ly/3NjLvF2>