



SECURITY VILLAGE



# apartments to let

51 m<sup>2</sup> | 2 bedroom | 1 bathroom

Second floor **R6 950**

First floor with balcony **R7 100**

Ground floor with patio **R7 450**

56 m<sup>2</sup> | 2 bedroom | 1 bathroom

Second floor **R7 350**

First floor with balcony **R7 450**

Ground floor with patio **R7 900**



from **R6 950**

Discover East On 82, a secure rental village with two-bed, one-bath apartments in **Kibler Park**. Nestled near Klipriviersberg Nature Reserve, these modern apartments are ideal for families and professionals. Amenities include a café, laundromat, jogging trail, kids play area, soccer field, and outdoor chessboard. With easy access to Southgate Mall, Mall of the South, schools, golf courses, and Johannesburg's CBD, it's the perfect place to call home.

## Features

- Café
- Walking & jogging trail
- Laundromat
- Jungle gym
- Kick-about field
- Kids' play area
- Outdoor chessboard
- Access control
- Manned guardhouse
- 24-Hour security
- Perimeter wall
- Patrolling guards
- Fibre-ready
- Prepaid water and electricity
- No rates or levies
- Dedicated client-care team
- Undercover parking
- Solar geyser



Proudly **central** developments

**Book a viewing now:**  
<https://bit.ly/3NjLvF2>

## Local amenities

### Shopping centres

- Mall of the South 7.2 km
- South Gate Mall 8.2 km

### Hospitals and day clinics

- Dis-Chem Pharmacy 7.2 km  
Mall of the South
- Dis-Chem Pharmacy 8.2 km  
South Gate Mall
- Dis-Chem Pharmacy Mondeor 10.3 km
- Netcare Mulbarton Hospital 10.9 km
- Chris Hani Baragwanath Hospital

### Prominent destinations

- Rietvlei Farm 10.8 km
- Panorama Flea Market 11.3 km
- South Downs Country Club 3.4 km
- Thaba Eco Hotel 5.9 km
- Eye of Africa Golf Estate 8.7 km
- Klipriviersberg Nature Reserve 3.8 km

### Schools

- Danie Theron Primary 1.5 km
- Kibler Park Secondary School 2.2 km
- Waterstone College 2.5 km
- Calvary Christian School 4.3 km

### Churches

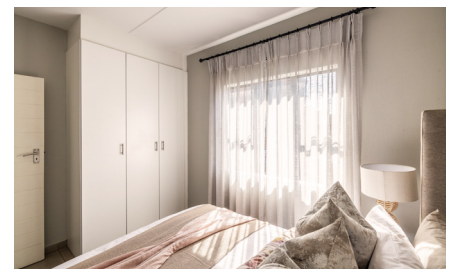
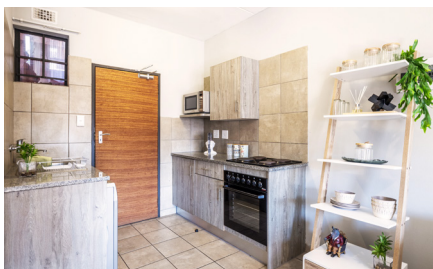
- House of Treasures Ministries JHB 3.9 km
- Metro Family Church 4.6 km
- Farmcare South Church 5.8 km
- Rhema South Family Church 7.1 km



51 m<sup>2</sup> | 2 bed | 1 bath



56 m<sup>2</sup> | 2 bed | 1 bath



Proudly  
**central**  
developments

**56 m<sup>2</sup> Virtual tour | 2 bed | 1 bath**

<https://bit.ly/43H5RhI>

**51 m<sup>2</sup> Virtual tour | 2 bed | 1 bath**

<https://bit.ly/3O5qgai>

**Video:** <https://bit.ly/44IIAOF>